

Wireless communication base stations provide uninterrupted power supply to residents



Overview

By providing instant backup support during power outages, the units provide redundancy for larger 5G base stations and allow for the uninterrupted operation of small cells and core network components. In telecom networks, uninterrupted power is essential for 24/7 communication reliability.

EverExceed's Telecom Power Systems provide: High-efficiency DC power supply for RRUs, BBUs, and auxiliary devices Smart lithium battery.

Communication sites depend on an uninterrupted power supply to ensure smooth operation. To prevent this, cellular towers and communication sites utilize emergency backup generators to maintain. In today's digitally connected world, telecom base stations play an essential role in ensuring uninterrupted communication services. For base stations located in deserts or other extreme environments, independent power supply is essential, as these areas are not only.

Wireless communication base stations provide uninterrupted power



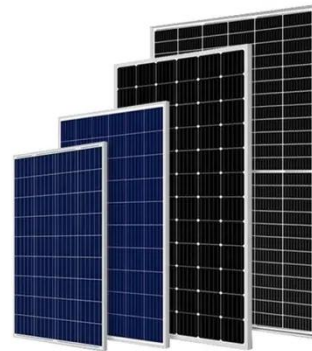
The role of UPS systems in 5G and 6G telecom networks

By providing instant backup support during power outages, the units provide redundancy for larger 5G base stations and allow for the uninterrupted operation of small cells and core network ...

[Get Price](#)

What Is a Telecom Base Station and How Does It Work?

In essence, the telecom base station is the wireless bridge that connects every mobile user to the digital world. It not only enables voice and data communication but also supports positioning, IoT, and ...



[Get Price](#)



Power Supply Solutions for Wireless Base Stations Applications

Power supplies can be employed in each of the three systems that compose wireless base stations. These three systems are known as the environmental monitoring system, the data communication ...

[Get Price](#)

Communication Base Station Energy Solutions

Many remote areas lack access to traditional power grids, yet base stations require 24/7 uninterrupted power supply to maintain stable communication services.

[Get Price](#)



Securing Backup Power for Telecom Base Stations - leagend

This article will explore in detail how to secure backup power for telecom base stations, discussing the components involved, advanced technologies, best practices, and future trends to ...

[Get Price](#)

Cell Phone Towers Use Standby Power Generators for Communications

If power is lost, communications can be disrupted, causing dropped calls and delayed data transmission. To prevent this, cellular towers and communication sites utilize emergency backup ...

[Get Price](#)



Algorithms for uninterrupted power supply to mobile ...

In this article, an algorithm for automatic control of energy sources was developed to improve the uninterrupted power

Modular design,
unlimited combinations in parallel
BUILT-IN DUAL FIRE PROTECTION MODULE



supply of mobile communication base stations. Based on the proposed ...

[Get Price](#)

Understanding Base Stations: The Backbone of Wireless Communication

Base stations are the backbone of modern wireless communication networks. They ensure that mobile devices can connect to the internet, make calls, and send data without interruption.

[Get Price](#)



Communication Batteries: Why Telecom Base Stations Have Unique ...

The phrase "communication batteries" is often applied broadly, sometimes including handheld radios, emergency devices, or general-purpose backup batteries. In practice, when ...

[Get Price](#)

Communication Base Station Backup Power Selection Guide

Choosing the appropriate standby power

supply is very important for the stable operation of the communication base station. This article will introduce how to select an appropriate backup ...

[Get Price](#)



Contact Us

For catalog requests, pricing, or partnerships, please visit:
<https://www.k3gizycko.pl>

