

Wind tower data to measure power generation



Overview

This dataset encompasses a wide range of information, including meteorological data, turbine specifications, power output records, and environmental factors. The wind energy researchers, scientists, and analysts working within NLR's National Wind Technology Center and wind energy program maintain open-source data sets and develop multifidelity predictive modeling and simulation capabilities to benefit the wind energy industry. Created using Nalu-Wind. Annual electricity generation from wind is measured in terawatt-hours (TWh) per year. This includes both onshore and offshore wind sources. By leveraging business intelligence and data analytics, organizations can ensure optimal performance, reduce downtimes, and enhance the overall. Abstract—This paper investigates the wind turbine power generation performance monitoring based on supervisory control and data acquisition (SCADA) data. Profiles that. It is imperative to carry out accurate, trust-worthy performance assessment and uncertainty quantification of wind turbine generators.

Wind tower data to measure power generation



Wind-Turbine-Dataset , IEEE DataPort

The Wind Power Technology Dataset is a comprehensive collection of data related to wind energy generation technology. This dataset encompasses a wide range of information, including ...

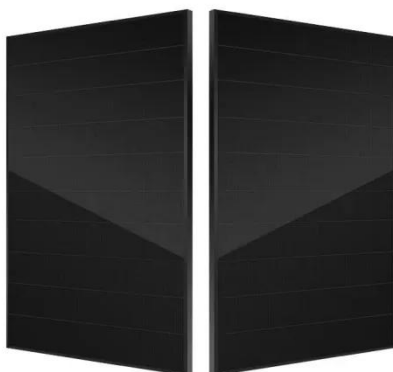
[Get Price](#)

A comparative analysis of real and theoretical data in offshore wind

This research conducts a comparative analysis of theoretical and actual power generation by this offshore wind farm and the methodology includes data collection and preparation, ...



[Get Price](#)



Performance Monitoring of Wind Turbines: A Comprehensive ...

Explore advanced performance monitoring for wind turbines in electric power generation, featuring data analytics insights for improved operations.

[Get Price](#)

Wind Data and Tools , Wind Research , NLR

Spanning 20 years and ideal for assessing wind power and meteorological variables at heights relevant for wind turbines, the data are accessible via download, API, and visualization tools.

[Get Price](#)



1075KWHH ESS

A database of hourly wind speed and modeled generation for US wind

Meteorological models are commonly used to estimate wind speeds, but vary in quality and are often challenging to access and interpret. The Plant-Level US multi-model WIND and generation ...

[Get Price](#)

Open Data , IEA Wind TCP

Danish Energy Agency (DEA) provides data contributing to generate an overview of the Danish energy supply system, including wind power. The Master Data Register of Wind Turbines is a national ...

[Get Price](#)



Data-Driven Wind Turbine Power Generation Performance ...

To monitor the variations of wind power curve profiles over time, multivariate and residual approaches are introduced

and applied.

[Get Price](#)



Frontiers , Data-Driven wind turbine performance assessment and

Instead of just using the SCADA data, measurements on operating wind turbines ("field measurements") can be used to enhance data-driven wind turbine performance assessment.

[Get Price](#)



Wind power generation, 2025

This dataset contains yearly electricity generation, capacity, emissions, import and demand data for over 200 geographies. You can find more about Ember's methodology in this ...

[Get Price](#)



U.S. Wind Turbine Database

Technical specifications of the turbines are based on the make and model and other information collected. With the release of this public version, we hope researchers and other interested parties

...

[Get Price](#)



Contact Us

For catalog requests, pricing, or partnerships, please visit:
<https://www.k3gizycko.pl>

