

What are the types of wind power types for communication base stations



Overview

In summary, communication base stations should be equipped with wind turbines that offer strong wind resistance, moderate power output, high stability and reliability, as well as durability and ease of maintenance. The presentation will give attention to the requirements on using. Abstract: Due to dramatic increase in power. When selecting wind turbines for communication base stations, it is essential to choose models that are suitable for their specific operational environments and power requirements.

What are the types of wind power types for communication base sta



Wind power construction of communication base stations

We investigate the use of wind turbine-mounted base stations (WTBSs) as a cost-effective solution for regions with high wind energy potential, since it could replace or even outperform

[Get Price](#)

Classification of wind power tower types for communication base ...

When base stations are located close to users, the transmitter power required by the mobile phone and the base station to communicate is relatively low. If base stations were located



[Get Price](#)



Why are wind turbines used for communication base stations built ...

This article explores how small wind turbines for remote telecom towers are revolutionizing energy solutions, highlighting their benefits and practical applications.

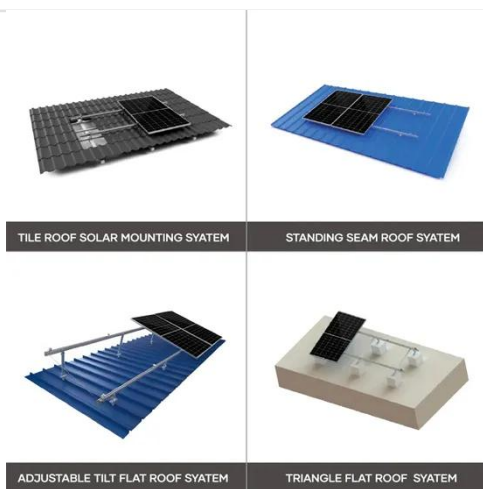
[Get Price](#)

Wind power level of communication

base station

Our study introduces a communications and power coordination planning (CPCP) model that encompasses both distributed energy resources and base stations to improve communication quality ...

[Get Price](#)



(PDF) Small windturbines for telecom base stations

The presentation will give attention to the requirements on using windenergy as an energy source for powering mobile phone base stations.

[Get Price](#)

What types of wind power are there for communication base stations

12 Types of Wind Turbines for Renewable · Explore 12 common types of wind turbines used in renewable energy production, detailing their unique designs and applications.

[Get Price](#)



How to build wind power stations for communication base stations

A wind-solar hybrid and power station technology, applied in the field of communication, can solve problems such as the difficulty of power supply for



communication base stations, and achieve

[Get Price](#)

What type of wind turbine should be selected for communication base

In summary, communication base stations should be equipped with wind turbines that offer strong wind resistance, moderate power output, high stability and reliability, as well as durability and ease of ...



[Get Price](#)



A review of renewable energy based power supply options for telecom

PV and wind-based hybrid power system mainly consists of 3 parts (Yu & Qian, 2009): (i) wind power generation system (which includes a wind turbine, generator, rectifiers and converters), (ii) PV power ...

[Get Price](#)

The Role of Hybrid Energy Systems in Powering Telecom Base Stations

Hybrid energy solutions enable telecom base stations to run primarily on

renewable energy sources, like solar and wind, with the diesel generator as a last resort. This reduces ...

[Get Price](#)



Contact Us

For catalog requests, pricing, or partnerships, please visit:
<https://www.k3gizycko.pl>

