

# Technical parameters for fast charging of inverter cabinets used in hospitals



## Overview

---

CharIN specification for DC chargers defines that the supported output voltage must lie between 200 V and 920 V, supply a maximum of 500 A, and operate within a power envelope of 350 kW. There is a range of DC/DC topologies, both isolated and non-isolated, that can be used to. Designing electrical installations in healthcare requires high expertise and knowledge about medical locations. At the same time, it requires good coordination with other types of installations that are necessary for the reliable operation of the entire building, such as information technology. The focus of Health Technical Memorandum guidance remains on healthcare-specific elements of standards, policies and up-to-date established best practice. They are applicable to new and existing sites, and are for use at various stages during the whole building lifecycle (see diagram below). It is. Megapack is available in 2-hour and 4-hour configurations. Reducing this to seven minutes would require a fast DC charger supplying 350 kW. Systems that support services such as diagnostic equipment, may be considered “critical” in a.

## Technical parameters for fast charging of inverter cabinets used in

---



### UPS Installation Specifications for Hospitals , PDF , Power Inverter

Description: A manually operated maintenance bypass switch, incorporated into the UPS cabinet to directly connect the critical load to the input AC power source, bypassing the rectifier/charger, ...

[Get Price](#)

---

### FOR DESIGN AND CONSTRUCTION OF Health Care Facilities

Technical Manual on Facility Design and Construction. In 1984 the Department of Health and Human Services (DHHS) removed from regulation the requirements relating to minimum standards of ...



[Get Price](#)

---

### Design considerations for fast DC chargers targeting 350kW

Some worries could be alleviated through better promotion of the existing network of charging points, although investment in fast DC charging HPCs, specifically to diminish range-anxiety for those worried ...



[Get Price](#)

---

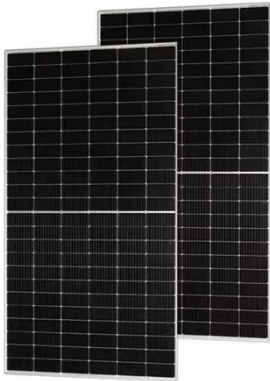
## Inverter Specifications and Data Sheet

The article provides an overview of inverter functions, key specifications, and common features found in inverter systems, along with an example of power calculations and inverter classification by power ...



[Get Price](#)

---



## MV & LV Power Distribution: Healthcare reference design guide

This standard applies to installations for hospitals, clinics, sanatoriums, medical centers, surgeries, ambulances and other designated objects and spaces (rooms).

[Get Price](#)

---

## ANSI/ASHRAE/ASHE Addendum j to ANSI/ASHRAE/ASHE ...

Revises the space name terminology, table organization, and subheadings to better correlate with the 2018 FGI Guidelines for Design and Construction of Hospitals and Outpatient ...

[Get Price](#)

---



## Megapack 2 Datasheet

One Megapack includes up to 19 independent battery modules  
Configurable for 2 to 6+ hour continuous charge/discharge  
Best-in-class round-trip efficiency and thermal system

performance

[Get Price](#)



---

## Health Technical Memorandum 06-01 Electrical services supply ...

Health Technical Memoranda (HTMs) give comprehensive advice and guidance on the design, installation and operation of specialised building and engineering technology used in the delivery of ...

[Get Price](#)



---

## ANSI/ASHRAE/ASHE Addendum p to ANSI/ASHRAE/ASHE ...

Owners/managers of health care facilities shall prepare a detailed program that shall include the clinical service expected in each space, the specific user equipment expected to be used ...

[Get Price](#)



---

## POWER CONTINUITY IN HEALTHCARE: SIZING AND ...

This paper has provided an overview of some of the key design considerations

involved in protecting critical operations in hospitals. But every application has unique challenges and there are rarely "of ...

[Get Price](#)



---

## Contact Us

For catalog requests, pricing, or partnerships, please visit:  
<https://www.k3gizycko.pl>

