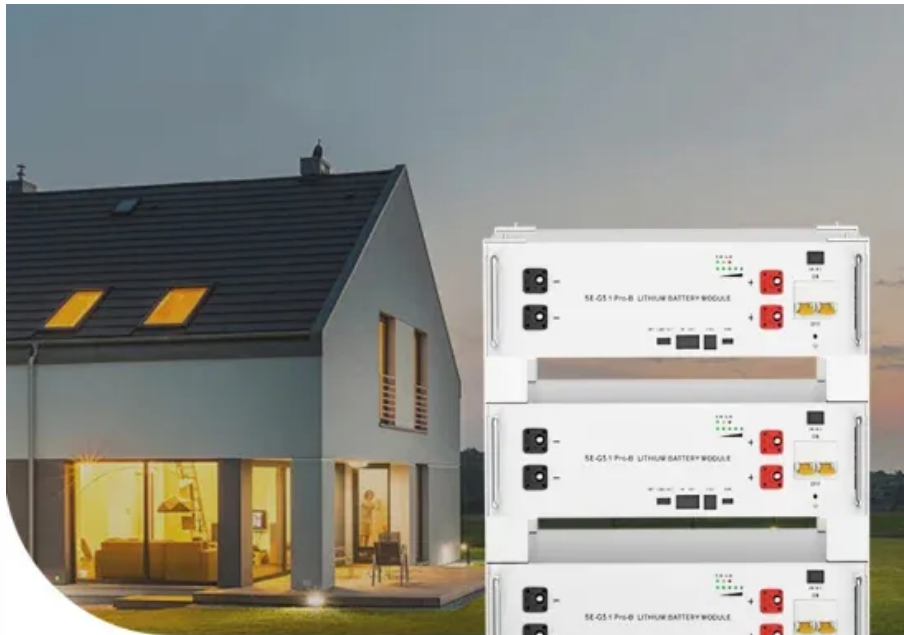


Solar power generation land supply policy



**Low Voltage
Lithium Battery**

6000+ Cycle Life



Overview

Actions to expand generation and consumption of solar and wind energy are seen in three distinct arenas: (1) incentivizing renewable energy production and use, (2) increasing the use of public lands for solar and wind energy projects, and (3) expanding electricity. Actions to expand generation and consumption of solar and wind energy are seen in three distinct arenas: (1) incentivizing renewable energy production and use, (2) increasing the use of public lands for solar and wind energy projects, and (3) expanding electricity. There is a patchwork of federal, state, and local policies and regulations pertaining to renewable energy systems that impact your project development. It is important to understand the policy landscape early in your development process. State Solar Carve-Out Programs - Learn about which states.) of utility-scale solar generation capacity, with 4.6 GWac under construction as of August 2012 (SEIA 2012). One concern regarding large-scale deployment of solar energy is its. Abstract—The rapid deployment of large numbers of utility-scale photovoltaic (PV) plants in the United States, combined with heightened expectations of future deployment, has raised concerns about land requirements and associated land-use impacts. Yet our understanding of the land requirements of. Across the country, solar farms have experienced rapid growth, supported by advancements in technology, cost reductions, and policy initiatives such as state-level renewable portfolio standards and tax credits. As shown in Map 1, roughly 18% of ground-mounted PV facilities in the U. were. Efficient deployment of renewable energy on our nation's public lands is crucial to achieving the Biden-Harris administration's goal of a carbon pollution-free power sector by 2035.

Solar power generation land supply policy



Policies and Regulations , US EPA

There is a patchwork of federal, state, and local policies and regulations pertaining to renewable energy systems that impact your project development. It is important to understand the ...

[Get Price](#)

Recent Developments in the Federal Multipronged Approach to ...

This statute provides the framework for the development of solar energy and wind energy projects on federal lands managed by the Bureau of Land Management (BLM).



[Get Price](#)

BLM Final Renewable Energy Rule Frequently Asked Questions

BLM amended its regulations for administering solar and wind energy applications and authorizations to further facilitate responsible development on BLM-managed public lands.

[Get Price](#)



Land Use & Solar Development -

SEIA

Like fossil fuel power plants, solar plant development requires some grading of land and clearing of vegetation. However, as utility-scale photovoltaics (PV) technology has improved over the last ...

[Get Price](#)



Land-Use Requirements for Solar Power Plants in the United ...

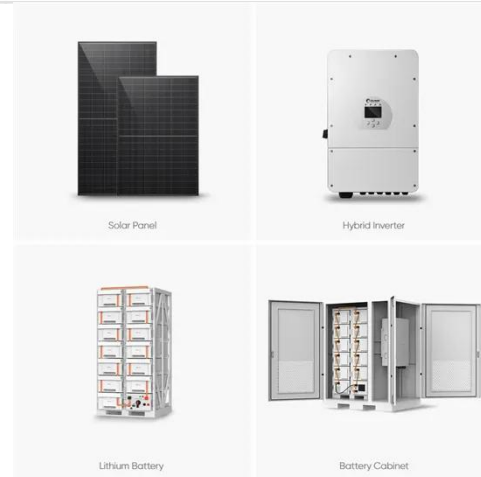
After discussing solar land-use metrics and our data-collection and analysis methods, we present total and direct land-use results for various solar technologies and system configurations, on both a ...

[Get Price](#)

Land Requirements for Utility-Scale PV: An Empirical Update on ...

Abstract--The rapid deployment of large numbers of utility-scale photovoltaic (PV) plants in the United States, combined with heightened expectations of future deployment, has raised concerns about land ...

[Get Price](#)



Harvesting the Sun-Twice: Agrivoltaics and Rural Land-Use

This dual land-use approach allows solar energy production to coexist with

farming activities, from crop cultivation to livestock grazing and supporting pollinator habitats.

[Get Price](#)



Solar Energy Toolkit: The Federal and State Context

At the federal level, there are several key policies, programs, and regulations that impact the development of solar PV and other renewable energy projects, influencing project procurement ...

[Get Price](#)



More land is needed for solar and wind infrastructure under a high

Over 30 percent more land would be needed in the Western US by 2050 to support new solar and wind infrastructure under a high renewables penetration scenario compared to a business ...

[Get Price](#)



Federal Lands and Renewable Energy: A Shifting Landscape

The U.S. Department of the Interior's August 2025 order adds new permitting hurdles for wind and solar on federal

lands. Learn how capacity density rules, stricter NEPA reviews, and longer ...

[Get Price](#)



Contact Us

For catalog requests, pricing, or partnerships, please visit:
<https://www.k3gizycko.pl>

