



## Overview

---

(1) Base stations with an emission bandwidth of 1 MHz or less are limited to 1640 watts equivalent isotropically radiated power (EIRP) with an antenna height up to 300 meters HAAT, except as described in paragraph (b) below. If. Statement - Joint FCC OSHA Statement on Tower Climber Safety Guide. This section applies to all Reclamation employees, contract workers, contractors, and subcontractors that work on communication towers, antennas, and antenna supporting structures, where workers are exposed to potential falls at heights. General Requirements Each region must designate a. What is the maximum distance between antenna and wind tunnel test?

the maximum value between the antenna width and thickness. If both the width and thickness of the antenna are less than 300 mm, the distance between wind tunnel test must be greater than or equal to 300 mm.

## Requirements for the climbing distance of wind power stations at c

---



### Wind power safety distance of city communication base station

Wind Power GeoPlanner(TM) Communication Tower Stu Apr 3, The separation distance required based on the characteristics of the communication systems will vary depending on the type (s) of ...

[Get Price](#)

### FCC OSHA Tower Climber Safety Guide

FCC OSHA Tower Climber Safety Guide Full Title: Occupational Safety and Health Administration, Communication Tower Best Practices Document Type: Report Bureau (s):

[Get Price](#)



### Wind Power GeoPlanner(TM) Communication Tower Stu

ion distance greater than 50 meters is necessary. From a practical standpoint, a setback distance greater than the maximum height of the turbine is necessary to insure a "fall" safety zon

[Get Price](#)

### What are the requirements for wind

### power in communication base ...

In rural or remote areas, where power from the grid is unavailable or unreliable, these cell sites require generator sets to provide power security as prime power or backup standby power.

[Get Price](#)



### eCFR :: 47 CFR 24.232 -

§ 24.232 Power and antenna height limits. (a) (1) Base stations with an emission bandwidth of 1 MHz or less are limited to 1640 watts equivalent isotropically radiated power (EIRP) with an antenna height ...

[Get Price](#)

### Wireless Estimator

All controls used during the normal operation of the hoist shall be located within easy reach of the operator at the operator's station. Controls shall be clearly marked (or be part of a ...

[Get Price](#)



### Communication base station wind power distance requirements

We investigate the use of wind turbine-mounted base stations (WTBSs) as a cost-effective solution for regions with high wind energy potential, since it could

## ESS



replace or even outperform

[Get Price](#)

### 4.08 Tower Climbing Safety

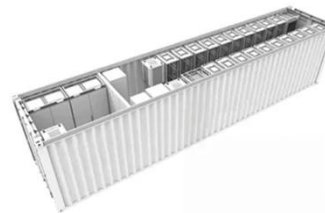
Before any climbing takes place, a safety meeting must occur with all qualified climbers and ground support personnel and cover specific information about the tower, the climb, PPE, ...

[Get Price](#)



 TAX FREE

1-3MWh  
BESS



### ONW EHS 7.7 P 02 Climbing Rules , PDF , Wind Power , Turbine

The document outlines the climbing rules and safety procedures for GE Onshore Wind employees and contractors working inside wind turbines. It includes revisions, definitions, planning considerations, ...

[Get Price](#)

### Requirements for the height distance of wind power stations for ...

...

The Ministry of New and Renewable Energy (MNRE) has revised the

guidelines for onshore wind power micro-siting, prioritising optimised output over the minimal distance

[Get Price](#)



---

## Contact Us

For catalog requests, pricing, or partnerships, please visit:  
<https://www.k3gizycko.pl>

