

Photovoltaic panel specifications dimensions and weight table



Overview

Our complete chart compares models by ft/cm and lbs/kg to help you plan your installation. 5 feet wide and weigh between 40 to 50 pounds. Understanding these specifications is crucial for determining roof. Standard Residential Panels Optimize Space and Handling: The industry-standard 60-cell panel dimensions (65" × 39" × 1. At 40-46 pounds, they can be safely handled by. You can find typical dimensions of 100W, 150W, 170W, 200W, 200W, 220W, 300W, 350W, 400W, and 500W solar panels summarized in the chart below. But, just to emphasize the problem, let's have a look at how the standard solar panel sizes are usually explained. Whether you're working on residential rooftops or utility-scale solar farms, these factors directly impact project feasibility and ROI. Standard. Thin film solar panels are lightweight and flexible, and while they offer the lowest efficiency of the three (6 to 15%), they are great for certain installations where the roof may not be able to accommodate the larger, heavier panels.

Photovoltaic panel specifications dimensions and weight table



How To Read A Solar Panel Spec Sheet: A Complete ...

Learn how to read a solar panel spec sheet to compare manufacturers, calculate efficiency, and determine the best panels for your project.

[Get Price](#)

Photovoltaic Panel Size, Specifications, and Weight: A ...

When planning a solar energy system, knowing the photovoltaic panel size, specifications, and weight is critical for design, logistics, and installation. Whether you're working on residential rooftops or utility ...

[Get Price](#)



Solar Panel Size & Dimensions Guide 2025 , Complete Specs

Complete guide to solar panel sizes and dimensions. Compare 60-cell vs 72-cell panels, weights, roof space requirements, and installation specs for 2025.

[Get Price](#)



Solar panel size and weight:

everything you need to know

Learn everything about solar system size, solar panel dimensions, and how much solar panels weigh in this complete guide for residential photovoltaic installations.

[Get Price](#)



Solar Panel Size And Weight: A Comprehensive Guide

Solar panels come in different sizes and weights, and various factors can impact their dimensions, including total wattage required, solar cell type and solar panel material. Consider

[Get Price](#)

Solar Panels Size & Weight (Including Commercial Dimensions)

Check out this full guide on solar panels size, weight, and other characteristics, including a comparison between Residential and Commercial panels.

[Get Price](#)



The Ultimate Guide to Solar Panel Size, Weight & Wattage (2025)

Find the exact solar panel size & weight in our 2025 guide. Our complete chart compares models by ft/cm and lbs/kg to help you plan your installation.

[Get Price](#)

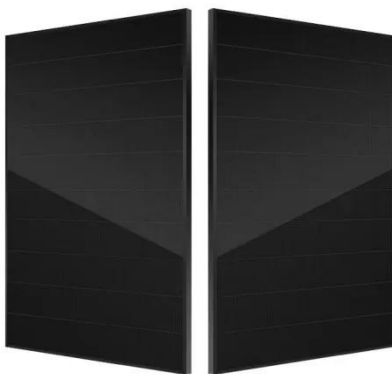


Standard Solar Panel Sizes And Wattages (100W-500W Dimensions)

The goal here is to get to the average solar panel size by wattage. You can find typical dimensions of 100W, 150W, 170W, 200W, 200W, 220W, 300W, 350W, 400W, and 500W solar panels summarized ...



[Get Price](#)



Photovoltaic panel specifications and weight table

Since the average residential solar panel weighs about 45 pounds and occupies about 18 square feet, the following calculations can be used to determine the approximate size

[Get Price](#)

Solar Panel Size & Weight: The Ultimate Guide 2024

Solar panel brands often exhibit slight variations in dimensions and weights due to differences in manufacturing

materials and construction.

[Get Price](#)



Contact Us

For catalog requests, pricing, or partnerships, please visit:
<https://www.k3gizycko.pl>

