

# Photovoltaic panel construction damage ratio standard



## Overview

---

This data sheet provides property loss prevention guidance related to fire and natural hazards, for the design, installation, operation and maintenance of all roof-mounted photovoltaic (PV) solar panels used to generate electrical power. This document does not address solar towers, roof-mounted. The Renewable Energy Ready Home (RERH) specifications were developed by the U. National Renewable Energy Laboratory, Sandia National Laboratory, SunSpec Alliance, and the SunShot National Laboratory Multiyear Partnership (SuNLaMP) PV O&M Best Practices. Meta description: Discover why photovoltaic panel construction damage ratio standards matter for solar projects. Learn current benchmarks, prevention strategies, and how new tech is reshaping quality control. You know that sinking feeling when pristine PV panels arrive cracked?

Last month, a Texas. Support to the ongoing preparatory activities on the feasibility of applying the Ecodesign, EU Energy label, EU Ecolabel and Green Public Procurement (GPP) policy instruments to solar photovoltaic (PV) modules, inverters and PV systems. reliability, degradation and lifetime. This should include: Clearances from the roof (to prevent debris).

## Photovoltaic panel construction damage ratio standard

---



### Photovoltaic Degradation Rates -- An Analytical Review

Degradation rates must be known in order to predict power delivery. This article reviews degradation rates of flat-plate terrestrial modules and throughout the last 40 years.

[Get Price](#)

---

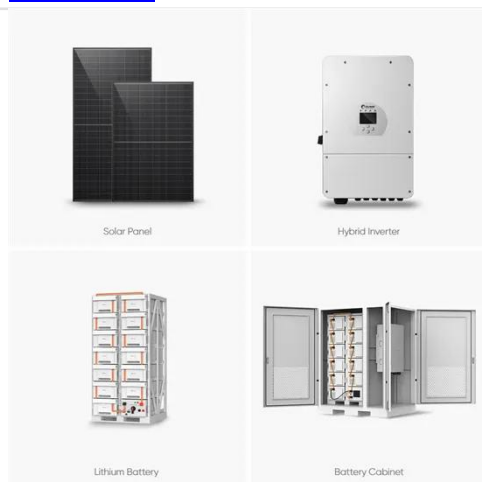
### Roof Mounted Photovoltaic Solar Panel Systems

In addition to the General Considerations and Planning for Installation Loss Prevention Standards, this standard outlines Risk Management advice for those property risks in the installation and ...



[Get Price](#)

---



### Best Practices for Operation and Maintenance of Photovoltaic ...

The goal of this guide is to reduce the cost and improve the effectiveness of operations and maintenance (O& M) for photovoltaic (PV) systems and combined PV and energy storage systems.

[Get Price](#)

---

## Photovoltaic Panel Construction

## Damage Ratio Standards: What You

...

Meta description: Discover why photovoltaic panel construction damage ratio standards matter for solar projects. Learn current benchmarks, prevention strategies, and how new tech is reshaping quality ...

[Get Price](#)



## Standards for photovoltaic modules, power conversion equipment ...

Standards available for the energy rating of PV modules in different climatic conditions, but degradation rate and operational lifetime need additional scientific and standardisation work (no specific standard ...

[Get Price](#)

## Solar Photovoltaic: SPECIFICATION, CHECKLIST AND GUIDE

About the Renewable Energy Ready Home Specifications Assumptions of the RERH Solar Photovoltaic Specification Builder and Specification Limitations

- 1.5 Document the solar resource potential at the designated array location
- 3.3 Install a conduit for the AC wire run from the designated inverter location to the electric service panel
- 4.2 Record the name and Web address of the electric utility service provider

5.1 Landscape Plan

5.2 Placement of non-array roof penetrations and structural building elements

Appendix A: RERH



Labeling Guidance The Renewable Energy Ready Home (RERH) specifications were developed by the U.S. Environmental Protection Agency (EPA) to assist builders in designing and constructing homes equipped with a set of features that make the installation of solar energy systems after the completion of the home's construction easier and less expensive. The specifications See more on Images of photovoltaic panel Construction damage Ratio Standard Physical Damage Solar Panel Solar Panel Failure Solar Panel Degradation Rate Damage To Solar Panels Solar Panel Ratings Explained Solar Panel Degradation Rate Chart Solar Panel Damage Solar Panel Ratings Solar Panel Degradation Chart A Review on Aerodynamic Characteristics and Wind-Induced Response of Photovoltaic module installation area and ratio. , Download Scientific Premium Photo , Aerial view of damaged by hurricane wind photovoltaic Premium Photo , Top view of destroyed by hurricane ian photovoltaic Aerial View of Damaged by Hurricane Wind Photovoltaic Solar Panels Premium Photo , Broken down photovoltaic solar panels destroyed by Solar panel damage classification (solar-panel-damage-classification 11 Most Common Solar Panel Defects - WINAICO Australia Premium Photo , Photovoltaic solar panels destroyed by hurricane strong See all nrel.gov [PDF]

## **Best Practices for Operation and Maintenance of Photovoltaic ...**

The goal of this guide is to reduce the cost and improve the effectiveness of operations and maintenance (O& M) for photovoltaic (PV) systems and combined PV and energy storage systems.

[Get Price](#)



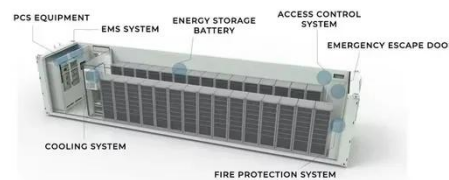
### DS 1-15 Roof-Mounted Solar Photovoltaic Panels (Data Sheet)

1.0 SCOPE This data sheet provides property loss prevention guidance related to fire and natural hazards, for the design, installation, operation and maintenance of all roof-mounted photovoltaic (PV) ...

[Get Price](#)

### Photovoltaic panel construction damage rate standard

Solar panel warranties vary depending on the manufacturer, but in the solar industry, a 10-year product warranty and a 25-year performance warranty are typically



[Get Price](#)

**LPW48V100H  
48.0V or 51.2V**



### Construction standards for installing photovoltaic panels on rooftops

This blog will aim to answer several questions related to evaluating solar panel damage and liability claims such as whether the code has information on solar panel loading and requirements (spoiler ...

---

[Get Price](#)

---

### **Photovoltaic panel construction damage ratio standard**

This guidance is based on Zurich's Roof-Mounted Photovoltaic Panels Risk Insight, a longer guide which covers some of the technical aspects of PV panel safety in more detail.

[Get Price](#)

---



### **Solar Photovoltaic: SPECIFICATION, CHECKLIST AND GUIDE**

Although system arrays (panels or collectors) can be racked up to meet the inclination/tilt needed for optimal system output, this specification is based on and limited to the known building attributes (roof ...

[Get Price](#)

---

## **Contact Us**

---

For catalog requests, pricing, or partnerships, please visit:  
<https://www.k3gizycko.pl>

