

# Is it normal for the PV combiner box cable to have a voltage of 400v to ground



## Is it normal for the PV combiner box cable to have a voltage of 400V

---



### What is the output voltage of a PV AC combiner box?

The output voltage of a PV AC combiner box is a critical parameter that is influenced by inverter output voltage, grid requirements, and cable losses. Maintaining the correct output voltage is crucial for ...

[Get Price](#)

---

### What is a PV Combiner Box and Why Your Solar System Can't ...

Your combiner box voltage rating must equal or exceed your array's maximum open-circuit voltage. Pro-Tip: Always check VOC (open-circuit voltage) at the lowest expected ...



[Get Price](#)

---



### Seven wiring mistakes in PV combiner boxes and isolators

Stop costly PV combiner box wiring mistakes. See 7 solar isolator wiring errors, DC disconnect best practices, and fixes to cut downtime and fire risk.

[Get Price](#)

---

## PV Combiner Box Voltage To

## Inverter

It is my understanding that you would wire your array into a combiner box, then to a charge controller. The charge controller will keep your battery (s) charged via solar during the day.

[Get Price](#)



## Solar Combiner Box Troubleshooting: 10 Common Problems and ...

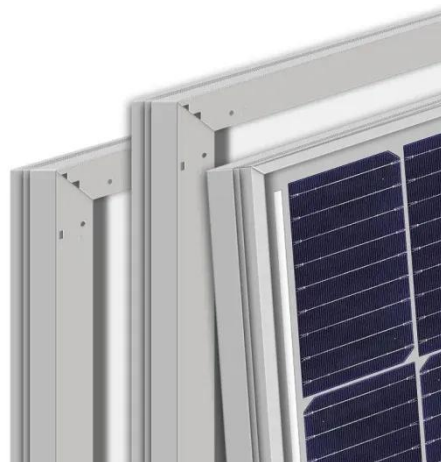
Loose connections, poor contact, or cable breakage are among the most common issues in combiner boxes. Symptoms: Fluctuating or reduced voltage and current output. Obvious signs of ...

[Get Price](#)

## Solar Combiner Boxes and Voltage Changes: What to Know

You should always pick a solar combiner box with a voltage rating higher than your system's highest voltage. This keeps your system safe and helps it last longer.

[Get Price](#)



## Understanding PV Combiner Boxes: Design, Function, Protection, and

What Is a PV Combiner Box? A combiner box is a key DC distribution device used

between PV strings and the inverter. Each string consists of solar modules wired in series, and the ...

[Get Price](#)



---

## What Is a Combiner Box in a Solar Panel System? Complete Guide

Place the combiner between the PV array and the inverter, in shade if possible, with short, neat cable runs, clear polarity marks, strong earthing, and correct voltage and current ratings.

[Get Price](#)



---

## PV Combiner Box Wiring Diagrams: Grounding & Bonding 2025

How do I properly ground and bond a PV combiner box per NEC requirements? Proper grounding and bonding involves three distinct conductor systems with separate functions.

[Get Price](#)



---

## Electrical Parameters to Consider When Designing a Combiner Box

When designing a combiner box, it is crucial to fully consider the electrical parameters, especially voltage, current, and power, to ensure the system

operates safely and reliably.

[Get Price](#)



---

## Contact Us

For catalog requests, pricing, or partnerships, please visit:  
<https://www.k3gizycko.pl>

