

# How much area does 1 megawatt of solar energy cover

**LPR Series 19'  
Rack Mounted**



## Overview

---

As a general guideline, 1 MW of solar photovoltaic (PV) systems typically necessitates approximately 2 to 4 acres of land. This figure can change depending on the array's design and the local regulations regarding spacing and setback requirements. When diving into the solar farm field, a burning question often surfaces: How much land does one need to launch a 1 MW solar power plant?

Well, buckle up because we're about to break it down. Generally speaking, for every megawatt (MW) of solar power you aim to generate, you'll need anywhere from. To answer the question regarding the area required for a 1 megawatt (MW) solar power generation system, several factors come into play which affect the land requirements. A 1 MW solar power plant is designed to produce this amount of power under optimal sunlight conditions. To optimize the area used and ensure maximum efficiency, the following factors must be carefully.

## How much area does 1 megawatt of solar energy cover

---



### How much area is needed for 1mw of solar power generation

As a general guideline, 1 MW of solar photovoltaic (PV) systems typically necessitates approximately 2 to 4 acres of land. This figure can change depending on the array's design and the ...

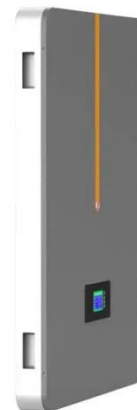
[Get Price](#)

---

### How Much Land For 1 Mw Solar Farm: A Quick Guide

Generally speaking, for every megawatt (MW) of solar power you aim to generate, you'll need anywhere from 5-10 acres of land.

[Get Price](#)



### Sizing Up the Sun: Unpacking the Scale of a 1 MW Solar Farm

In terms of size, a 1 MW solar farm typically covers an area of around 5-7 acres, depending on the efficiency of the solar panels used. The farm would contain thousands of individual ...

[Get Price](#)

---

### How Many Acres Of Solar Panels Per

## Megawatt?

So, how many acres of solar panels per megawatt? A conservative estimate for the footprint of solar development is that it takes 10 acres to produce one megawatt (MW) of electricity. ...

[Get Price](#)



## How much land does a solar power plant require?

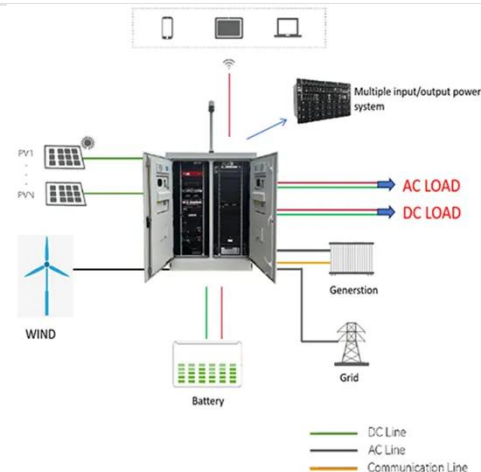
How much land does a solar power plant require? Utility scale solar power plants require a significant amount of land due to the number of solar panels required. Modern plants require 5 to 15 acres per ...

[Get Price](#)

## What is area required for 1mw solar plant?

A megawatt (1 MW) solar power plant typically requires an area of about 1 to 5 acres (0.4 to 2 hectares). This range can be affected by a number of factors, including:

[Get Price](#)



## How many square meters are needed for 1MW of solar power? A

...

So, how many square meters does 1MW of solar power need to maximize its

energy? This article will help you answer the above question through detailed instructions on how to calculate ...

[Get Price](#)



---

## How Much Land Is Required for 1 MW of Solar Power?

The land area for a 1 MW solar installation varies considerably, typically ranging from 4 to 10 acres, influenced by many factors. The land area required for a 1 MW solar installation depends ...

[Get Price](#)



---

## How Much Space Does A Solar Power Plant Take Up?

Ultimately, as a rule of thumb, each megawatt requires roughly 4 to 5 acres, hinting that a 10 MW solar installation may need about 40 acres. However, developers should remain flexible, as ...

[Get Price](#)



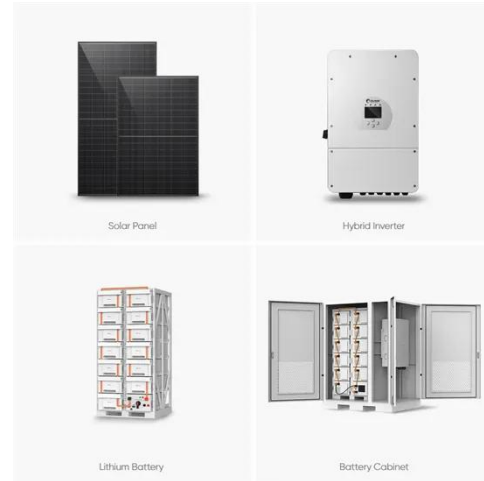
---

## How Much Land Does Renewable Energy Take Up

Solar farms vary significantly in size, typically measured in megawatts (MW) of capacity. A 1 MW solar farm typically requires around 4-7 acres of land, with

traditional estimates suggesting 5 ...

[Get Price](#)



## Contact Us

---

For catalog requests, pricing, or partnerships, please visit:  
<https://www.k3gizycko.pl>

