

France communication base station inverter grid-connected wireless room



Overview

This document describes the networking architecture, communication logic, and operation and maintenance (O&M) methods of the Commercial and Industrial Grid Forming ESS Solution (on-grid, SmartLogger3000), as well as the installation, cable connection, check and preparation. This document describes the networking architecture, communication logic, and operation and maintenance (O&M) methods of the Commercial and Industrial Grid Forming ESS Solution (on-grid, SmartLogger3000), as well as the installation, cable connection, check and preparation. Communication Base Station Inverter Dec 14,  &#; Power conversion and adaptation: The inverter converts DC power (such as batteries or solar panels) into AC power to adapt to the power needs of various communication equipment. This is critical to The Future of Hybrid Inverters in 5G. Direct Air to Ground Communication envisages a set of Base Stations suitably placed at the ground and directly communicating with airborne object, which may be an aircraft or any other aerial vehicle. These base stations transmit the radio waves to the airborne object that crosses the range of the. How to optimize the operation of Bess inverter?

This study introduces a control strategy designed to optimize the operation of BESSs. This control strategy optimizes the BESS operation by dynamically adjusting the inverter's power reference, thereby, extending the battery cycle life. Is wireless. [2] 5G networks divide coverage areas into smaller zones called cells, enabling devices to connect to local base stations via radio. To further explore the energy-saving potential of 5 G base stations, this paper proposes an energy-saving. Micro inverters can be connected to the wireless router through the built-in Wi-Fi module, string inverters and energy storage inverters can be connected to the wireless router through the external Wi-Fi data collector, the Wi-Fi module or data collector will transmit the data of the inverter.

France communication base station inverter grid-connected wireless



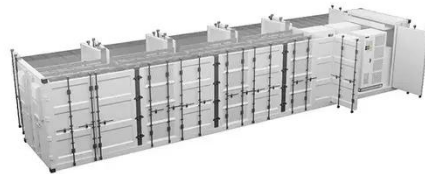
France Factsheet

Imports - commodities Page last updated: Tuesday, Janu

[Get Price](#)

France Travel Guide by Rick Steves

Explore France! Get inspired with Rick Steves' recommended places to go and things to do, with tips, photos, videos, and travel information on France.



[Get Price](#)



France - Travel guide at Wikivoyage

France is known for its long turbulent history, unique flair and lifestyle, and picturesque old towns, châteaux and fortresses. It is also blessed with its landscapes, where the sun shines gold upon the ...

[Get Price](#)

Grid-connected design scheme for ground-to-air communication ...

The control design of this type of inverter may be challenging as several algorithms are required to run the inverter. This reference design uses the C2000 microcontroller (MCU) family of devices to ...

[Get Price](#)



Communication Base Station Energy Storage Solutions

Today, modular lithium-based energy storage systems have become the preferred solution for ensuring continuous operation, even under unstable grid or off-grid conditions.

[Get Price](#)

5g communication base station inverter grid-connected ...

· In this paper, a distributed collaborative optimization approach is proposed for power distribution and communication networks with 5G base stations.

[Get Price](#)



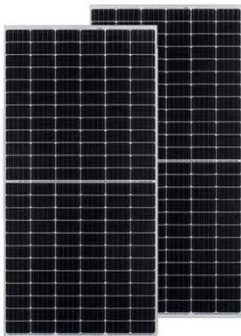
France , Culture, Facts & Travel ,

France in depth country profile. Unique hard to find content on France. Includes customs, culture, history, geography, economy current events, photos, video, and more.

[Get Price](#)

Communication Base Station Inverter Solution Project Overview

In short, integrating solar energy systems into Communication Base Station Energy Solutions Due to harsh climate conditions and the absence of on-site personnel to maintain fuel generators, the ...

[Get Price](#)

France , History, Maps, Flag, Population, Cities, Capital, & Facts

France, a country of northwestern Europe, is historically and culturally among the most important countries in the Western world. It has also played a highly significant role in international ...

[Get Price](#)

5G COMMUNICATION BASE STATION INVERTER GRID ...

A significant number of 5G base stations (gNBs) and their backup energy storage systems (BESSs) are redundantly

configured, possessing surplus capacity during non-peak traffic hours.

[Get Price](#)

50KW modular power converter



2025 Communication Base Station Inverter Grid-connected ...

In the future, it can be envisioned that the ubiquitously deployed base stations of the 5G wireless mobile communication infrastructure will actively participate in the context of the smart grid as a new type of ...

[Get Price](#)

COMMUNICATION BASE STATION INVERTER GRID CONNECTED

This research focuses on the discussion of PV grid-connected inverters under the complex distribution network environment, introduces in detail the domestic and international standards and requirements ...

[Get Price](#)



France Maps & Facts

Where is France? France is a country located in North Western Europe. It is geographically positioned both in the



Northern and Eastern hemispheres of the Earth. France is ...

[Get Price](#)

5g communication base station inverter equipment bsc introduction

· This paper discusses the site optimization technology of mobile communication network, especially in the aspects of enhancing coverage and optimizing base station layout.



[Get Price](#)



Communication base station inverter grid-connected work transfer

· The power supply for wireless charging is often provided through base stations connected to the electrical grid. Additionally, it includes a power transmitter that wirelessly

[Get Price](#)

France : Explore France and its wonders

Here, you can take a look behind the scenes of this global event and rediscover the history of this jewel of

France's heritage, which has inspired so many artists.

[Get Price](#)



France: All You Must Know Before You Go (2026)

There's much more to France than Paris--from the fairy-tale châteaux of the Loire Valley to the lavender fields of Provence, and the French Riviera's celebrity-studded beaches.

[Get Price](#)

Communication base station inverter grid-connected energy ...

To further explore the energy-saving potential of 5 G base stations, this paper proposes an energy-saving operation model for 5 G base stations that incorporates communication caching

[Get Price](#)



Contact Us

For catalog requests, pricing, or partnerships, please visit:
<https://www.k3gizycko.pl>

