

Environmental pollution caused by wind power generation enterprises



Environmental pollution caused by wind power generation enterprises



Considerations on environmental, economic, and energy impacts of wind

Wind energy is one of the promising cleaner energy sources as it is feasible and cost-effective. However, the development of wind farms causes impacts on sustainability aspects. This ...

[Get Price](#)

What Pollution Do Wind Turbines Cause? - The Institute for

What Pollution Do Wind Turbines Cause? While often touted as a clean energy source, wind turbines do generate pollution, albeit far less than fossil fuel alternatives. This pollution arises ...



[Get Price](#)



The Environmental Impact of Wind Power: A Balanced Review

Intro Wind power stands as a significant player in the transition toward renewable energy. Its growth has been propelled by the increasing urgency to mitigate climate change and reduce ...

[Get Price](#)

What type of pollution does wind

power cause?

Understanding Wind Power's Environmental Footprint Wind turbines, the backbone of wind power generation, are complex machines with a lifecycle spanning decades. This lifecycle ...

[Get Price](#)



Deye Official Store

10 years warranty

Wind Energy, Its Application, Challenges, and Potential Environmental

Government and legislative authorities around the globe are concerned about the pollution-related problems and criteria affecting the energy paradigm with ever-increasing ...

[Get Price](#)

Wind Turbines: Environmental Impact Analysis

Noise Pollution and Human Health Noise pollution is a critical dimension of the environmental impact caused by wind turbines. As renewable energy becomes increasingly central ...

[Get Price](#)



 **Efficient**
Higher Revenue

- Max. Efficiency 97.5%
- Max. PV Input Voltage 600V
- 100% Peak Output Power
- 3 MPPT Trackers, 150% DC Input Overvoltage
- Max. PV Input Current 15A, Compatible with High Power Modules

 **Intelligent**
Simple O&M

- IP65 Protection Degree: support outdoor installation
- Smart IV Curve Stages Function: locate PV string faults accurately and automatically detect faults
- DC & AC Type II SPD: prevent lightning damage
- Battery Reverse Connection Protection

 **Flexible**
Abundant Configuration

- Plug & Play, EPS Switching Under 10ms
- Compatible with Lead-acid and Lithium Batteries
- Max. 6 units in parallel
- AFCI Function (Optional): when an arc fault is detected the inverter immediately stops operation

Does Wind Power Create Pollution?

Government policies and regulations are pivotal in shaping the wind energy landscape and mitigating any associated pollution. By setting stringent



environmental standards for the ...

[Get Price](#)

Environmental Impacts of Wind Power

Wind power generates electricity without toxic pollution or global warming emissions, but it does have some environmental impacts that should be recognized and mitigated.

[Get Price](#)



What are the environmental impacts of wind power?

Through scientific environmental assessment, effective governance measures, and public participation, we can minimize the impact of wind power on the environment and achieve ...

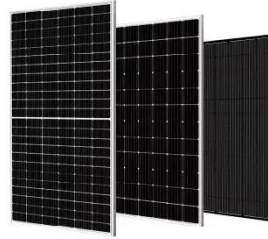
[Get Price](#)

Environmental impact and pollution-related challenges of renewable wind

The given discussion can stimulate a possible solution for decision makers and raise attentiveness of environmental

characteristics and a set of challenges related to the wind power ...

[Get Price](#)



Contact Us

For catalog requests, pricing, or partnerships, please visit:
<https://www.k3gizycko.pl>

