

Double-glass module structure



Overview

Traditional solar panels typically feature a glass front and a polymer backsheet. In contrast, double glass modules replace the polymer layer with another glass sheet, creating a robust sandwich structure. The dual-glass structure provides. Two types of photovoltaic module structures coexist: Glass-polymer film (also called glass-backsheet) type modules.

Double-glass module structure



2025 Complete Guide to Glass-Glass Solar Panels: The Top Choice ...

Compared to traditional glass-backsheet modules, they offer greater durability and environmental resistance. The dual-glass structure provides enhanced protection for solar cells ...

[Get Price](#)

What are Double Glass Solar Panels?

Double-glass solar modules are made up of two layers of tempered glass that cover both sides of the solar panel. As snow accumulates on a typical solar panel or people stomp on it (during ...



[Get Price](#)



What are the differences between single-glass and double-glass solar

This means that the whole structure of Raytech double-glass solar modules (two layers of glass and one layer of solar cells in the middle) are highly resistant to chemical reactions such as ...

[Get Price](#)

Double glass solar module , Maysun Solar

Double glass modules use an innovative design with glass on both sides, offering higher photovoltaic conversion efficiency and better environmental characteristics.

[Get Price](#)



INSTRUCTIONS FOR PREPARATION OF PAPERS

Technical problems such as manufacturing yield, extra weight and the lack of frame support were solved by selecting a double heat-strengthened glass structure with a thickness of 2.5mm (or 2mm) on both ...

[Get Price](#)

Glass-Glass Solar Panel Technology

Glass-glass module structures (Glass Glass or Double Glass) is a technology that uses a glass layer on the back of the modules instead of the traditional polymer backsheets.

[Get Price](#)



What is the Double Glass (Dual Glass) Photovoltaic Solar Panel?

Glass-glass module structures (Dual Glass or Double Glass) is a technology that uses a glass layer on the back of the



modules instead of the traditional polymer backsheet.

[Get Price](#)

What are the advantages of dual-glass Dualsun modules?

Dual-glass type modules (also called double glass or glass-glass) are made up of two glass surfaces, on the front and on the rear with a thickness of 2.0 mm each.

[Get Price](#)



Double the strengths, double the benefits

In the ever-evolving world of photovoltaic technology, double glass solar modules are emerging as a game-changer. By encapsulating solar cells between two layers of glass, these ...

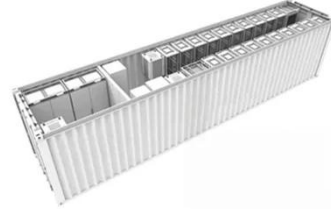
[Get Price](#)

High performance double-glass bifacial PV modules through ...

Significant amount of near infrared light passes through bifacial cells. Double-glass structure shows a loss of ~ 1.30% compare to the glass/backsheets

structure under STC measurements.

[Get Price](#)



Contact Us

For catalog requests, pricing, or partnerships, please visit:
<https://www.k3gizycko.pl>

