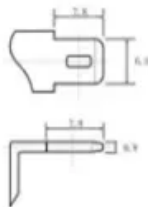


Communication base station wind power wind power technology

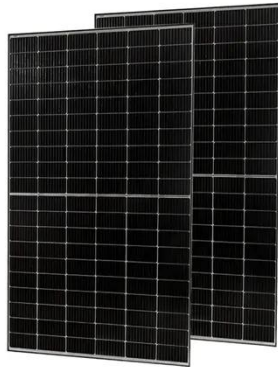
12.8V6Ah



Nominal voltage (V):12.8
Nominal capacity (ah):6
Rated energy (WH):76.8
Maximum charging voltage (V):14.6
Maximum charging current (a):6
Floating charge voltage (V):13.6~13.8
Maximum continuous discharge current (a):10
Maximum peak discharge current @10 seconds (a):20
Maximum load power (W):100
Discharge cut-off voltage (V):10.8
Charging temperature (°C):0~+50
Discharge temperature (°C): -20~+60
Working humidity: <95% R.H (non condensing)
Number of cycles (25 °C, 0.5c, 100%doD): >2000
Cell combination mode: 32700-4s1p
Terminal specification: T2 (6.3mm)
Protection grade: IP65
Overall dimension (mm):90*70*107mm
Reference weight (kg):0.7
Certification: un38.3/msds



Communication base station wind power wind power technology



CN111447693A

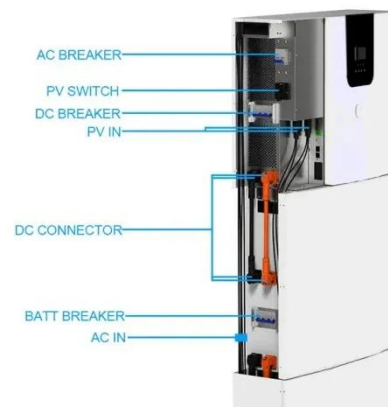
The sail module and the power generation module are erected on a high-rise signal tower, the conversion efficiency is improved through the built-in speed-increasing gear structure, the windward

[Get Price](#)

Research on Offshore Wind Power Communication System Based on ...

In view of the special needs of the communication system, a communication system scheme for offshore wind farms based on 5G technology is proposed.

[Get Price](#)



Near and far points of wind power for communication base stations

We investigate the use of wind turbine-mounted base stations (WTBSs) as a cost-effective solution for regions with high wind energy potential, since it could replace or even outperform

[Get Price](#)

(PDF) Small windturbines for telecom base stations

The presentation will give attention to the requirements on using windenergy as an energy source for powering mobile phone base stations.

[Get Price](#)



Research on Capacity Optimization Configuration of Wind/PV

An individual base station with wind/photovoltaic (PV)/storage system exhibits limited scalability, resulting in poor economy and reliability. To address this, a collaborative power supply ...

[Get Price](#)

Wind power construction of communication base stations

We investigate the use of wind turbine-mounted base stations (WTBSs) as a cost-effective solution for regions with high wind energy potential, since it could replace or even outperform



[Get Price](#)

5G and energy internet planning for power and communication ...

Our research addresses the critical intersection of communication and power systems in the era of advanced information technologies. We highlight



the strategic importance of ...

[Get Price](#)

Construction and management of wind power for communication base ...

...

Can communication and power coordination planning improve communication quality of service? Our study introduces a communications and power coordination planning (CPCP) model that ...



[Get Price](#)

How to make wind solar hybrid systems for telecom stations?

Then, the application of wind solar hybrid systems to generate electricity at communication base stations can effectively improve the comprehensive utilization of wind and solar energy.

[Get Price](#)

New base station for wind power communication

Our study introduces a communications



and power coordination planning (CPCP) model that encompasses both distributed energy resources and base stations to improve communication quality ...

[Get Price](#)

114KWh ESS



Contact Us

For catalog requests, pricing, or partnerships, please visit:
<https://www.k3gizycko.pl>

