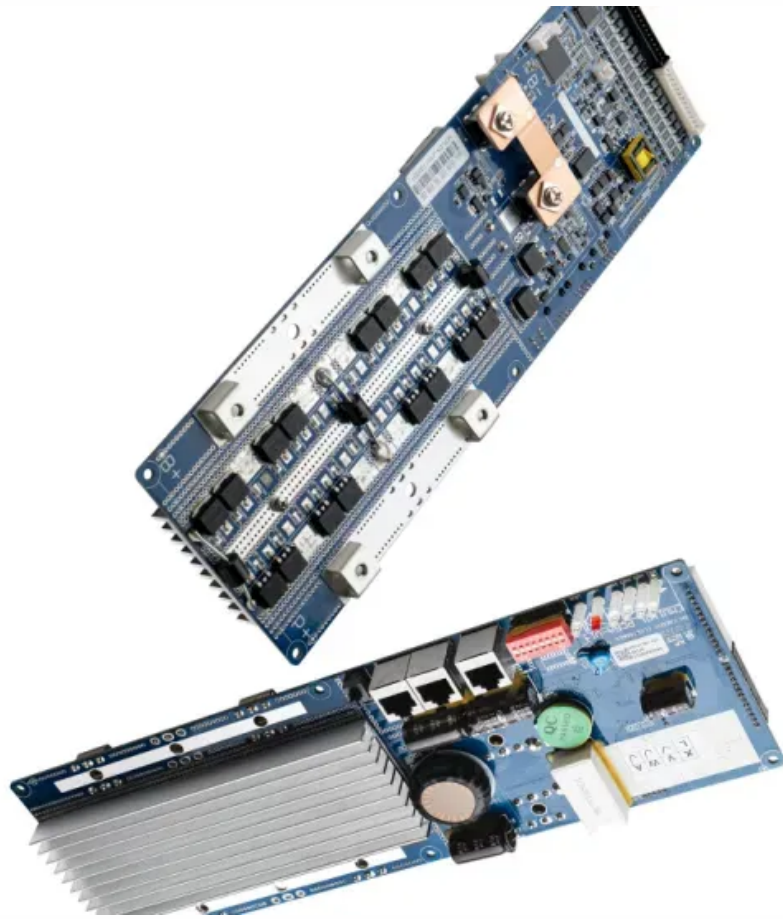


Actual discharge of electric energy storage power supply



Actual discharge of electric energy storage power supply



Analysis of the discharge process of a TES-based electricity storage

Evaluation of depth of discharge, discharge efficiency and electricity production during a full discharge: percentage error using various simplified models from literature, with respect to the off ...

[Get Price](#)

Maximum Discharge Capacity of Energy Storage Power Stations: ...

The secret lies in their maximum discharge capacity - a critical metric determining how quickly stored energy can be released. This article explores discharge capacity fundamentals, real-world ...



[Get Price](#)



Typical energy storage capacity compared to typical discharge ...

Graph of typical energy storage capacity compared to typical discharge duration for various geologic and nongeologic energy storage methods. Oval sizes are estimated based on current technology.

[Get Price](#)

Battery Energy Storage System

Evaluation Method

Long-term (e.g., at least one year) time series (e.g., hourly) charge and discharge data are analyzed to provide approximate estimates of key performance indicators (KPIs).

[Get Price](#)



Energy storage for electricity generation

Gross generation reflects the actual amount of electricity supplied by the storage system. Net generation is gross generation minus electricity used to recharge the storage system and the electricity ...

[Get Price](#)

Discharge power of energy storage

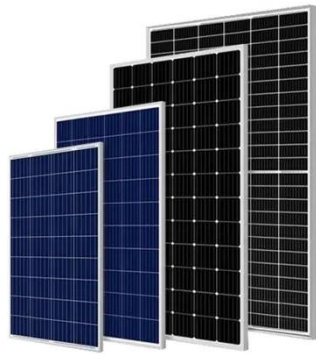
Energy storage discharge power is a pivotal concept within the field of energy management, predominantly concerning how storage systems can contribute to energy loads.

[Get Price](#)



Grid-Scale Battery Storage: Frequently Asked Questions

A battery energy storage system (BESS) is an electrochemical device that charges (or collects energy) from the



grid or a power plant and then discharges that energy at a later time to provide electricity or ...

[Get Price](#)

DOE ESHB Chapter 16 Energy Storage Performance Testing

In energy storage applications, it is often just as important how much energy a battery can absorb, hence we measure both charge and discharge capacities. Battery capacity is dependent on the ...

[Get Price](#)



What is the energy storage discharge power? , NenPower

Discharge power in energy storage refers to the maximum rate at which energy can be released from a storage system, like a battery, expressed in watts or kilowatts.

[Get Price](#)

Energy Storage by the Numbers

Pumped hydro energy storage (PHES) accounts for over 90 percent of the world's storage capacity, and is based on simple physics of using renewable energy to pump water above a ...

[Get Price](#)



Contact Us

For catalog requests, pricing, or partnerships, please visit:
<https://www.k3gizycko.pl>

